



**Species at Risk and
Local Government:**
A Primer for British Columbia

Mike Pearson
Pearson Ecological

Michael Healey
UBC

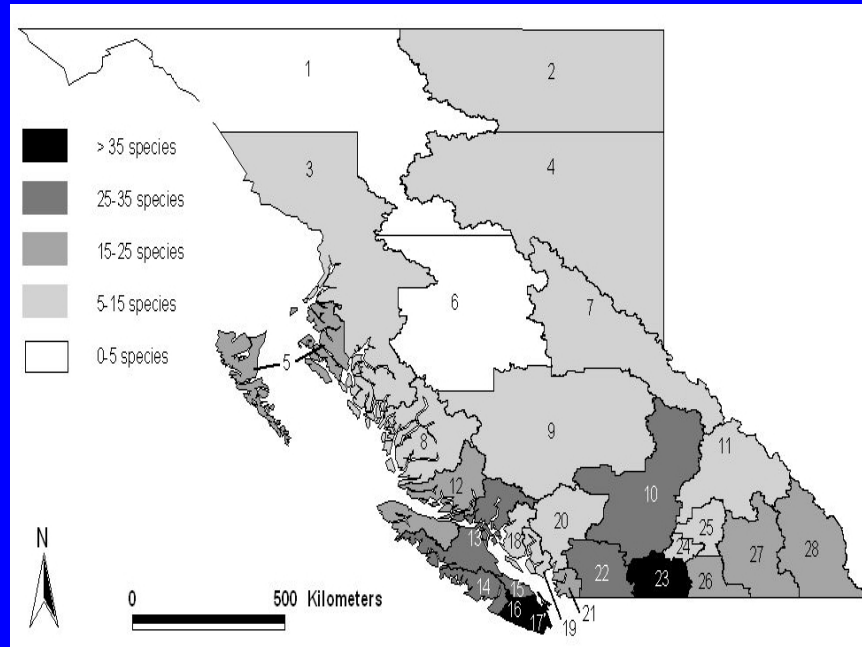
Photo: George E. Hartwell

Outline

- Local governments and species at risk
- Local government responsibilities under SARA
- Challenges for local government.
- A new tool – The SAR Primer

Local Governments and Species at Risk

1. Species at risk are concentrated near human population centres.



Capital Region (54)

Okanagan-Similkameen (54)

Cowichan Valley (46)

Fraser Valley (36)

Private land ownership is highest in these areas.

2. Local Governments control land use on most private lands.



Habitat loss is the primary threat to most species at risk.

3. Local governments own a lot of SAR habitat.



4. Local governments build and maintain infrastructure



Great potential to
degrade or restore
habitats

5. Many species at risk have small distributions



Local government boundaries are closest to this scale.

6. Flexible, Powerful Tools for Conservation

Official community plans

Zoning by-laws

Development permits

Subdivision approvals

Environmental by-laws

Conservation covenants

Land acquisition

Public education programs

SARA Responsibilities

1. For aquatic species and migratory birds SARA applies everywhere



Nooksack dace



© Steven Dowlan

Long-billed curlew

2. Listed species must be considered in all CEAA reviews



Western
painted turtle



Taylor's checkerspot



Howell's
triteleia

3. The ‘Safety Net’

- Provinces are required to protect listed species to a SARA standard
- Local governments are creations of the province



Showy phlox



Tiger salamander

Challenges for Local Government

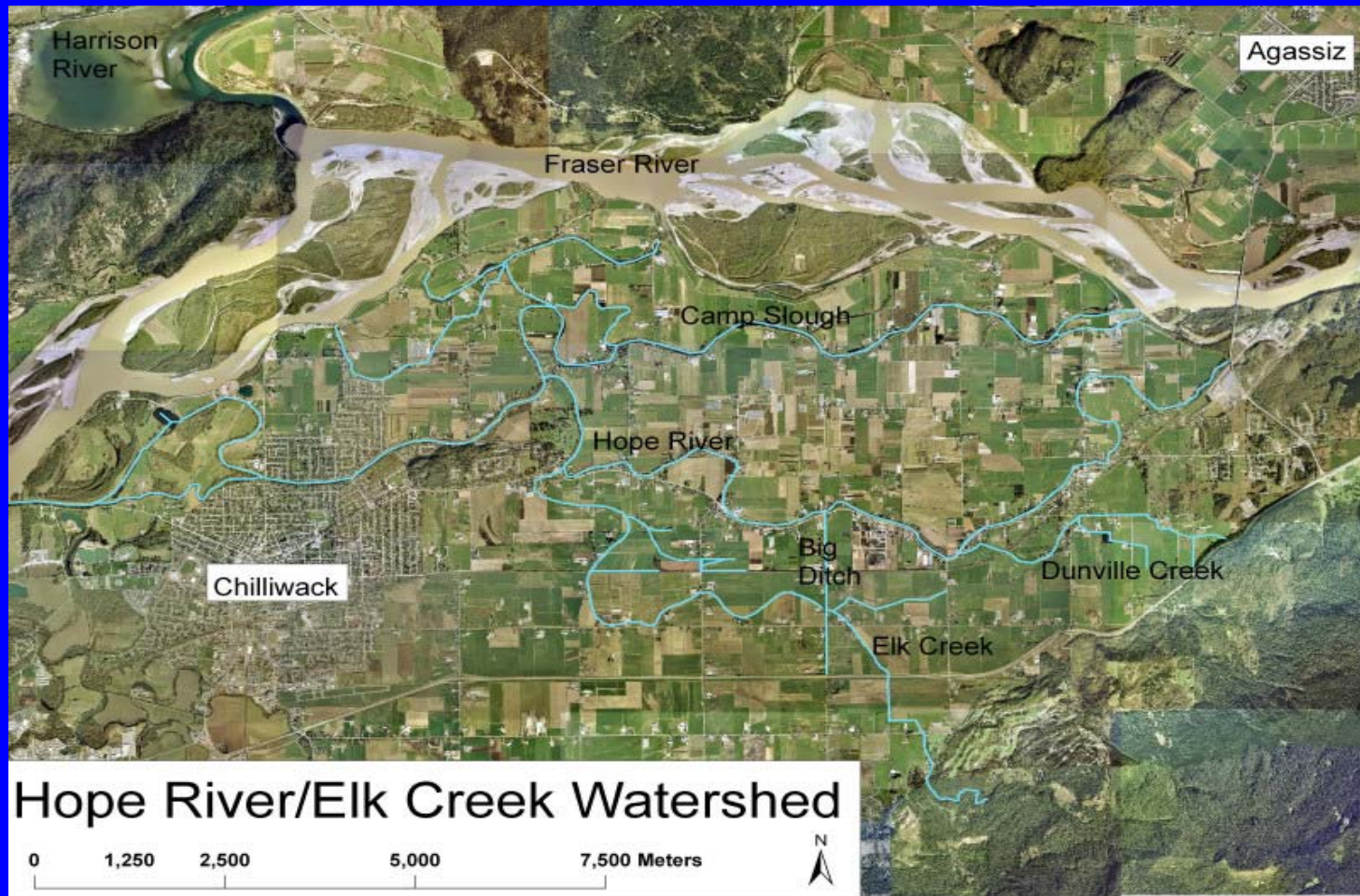
1. Resources: Staff time

Specialized expertise



2. Information:

Which species are likely to occur where?



How do we manage for species X?



Species at Risk and Local Government: A Primer for BC

- *New Stewardship Series* document
- Web based and interactive
- Searchable by Regional District and habitat type.
- Printable summary sheets for species with management recommendations.
- Overview of SARA from a Local Government perspective
- Options and strategies for Local Government

www.stewardshipcentre.bc.ca

Management Guilds

Guild: A group of species that uses the same environmental resources in a similar way



© 2004 Gary Nafis



Lisa Powers, Copyright 2002



Burrowing Guild

Management Guilds

Guild: A group of species that uses the same environmental resources in a similar way



Amphibious Guild

Management Guilds

Guild: A group of species that uses the same environmental resources in a similar way



Butterfly Guild

Thank You!

- Mike Healey, UBC
- Many generous photographers
- Dr. Hans Schreier and students, UBC

- Gretchen Harlow, Environment Canada
- Jan Kirkby, Environment Canada
- Naomi Tabata, Stewardship Centre of British Columbia
- Rob Knight, BC Min. of Env./Community Mapping Network
- Adrian Irwin, Lanarc Consultants

- Funding: Hampton Fund, UBC
Environment Canada